

dba

DISC BRAKES AUSTRALIA

NEW PRODUCT UPDATE

//PRESS RELEASE
FEBRUARY 2022



STREET SERIES

4000 SERIES

5000 SERIES

dba STREET
SERIES

dba STREET
PERFORMANCE

dba XTREME
PERFORMANCE

BRAKE
CALIPER

BRAKE
SHOES

FOR FURTHER INFORMATION, VISIT DBA.COM.AU

5000SERIES



PERFORMANCE IS IN OUR DNA

Offering uncompromising quality and maximum performance in road and track brake applications.



Disc Brakes Australia – Exclusive Brake Partner of Tickford Racing

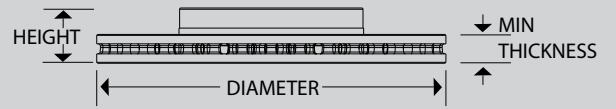


Recommended with DBA BRAKE PADS:



FOR MORE INFO & WHERE TO BUY VISIT DBA.COM.AU

dba
DISC BRAKES AUSTRALIA



CHEVROLET CAMARO ZL1

Part No : **DBA53916.1S**

Barcode : **9316391459763**



SUITABLE FOR USE WITH

Series: G6 [OE Direct Replacement] Nuts only supplied

DESCRIPTION & DIMENSIONS (mm)	
Surface Design	T3
Vent Design	Vented
Diameter	390
Height	36
Thickness	36
Min/Max Thickness	34
Centre Hole	179.1
No. Bolts	10
Position	Front
Year Manufactured	2017 - on



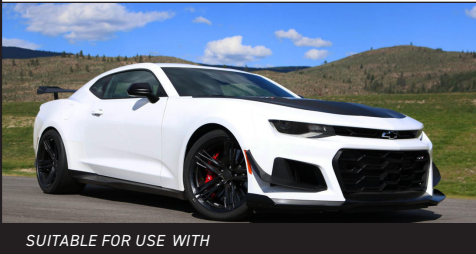
5000SERIES

1

CHEVROLET CAMARO ZL1

Part No : **DBA53916.1XD**

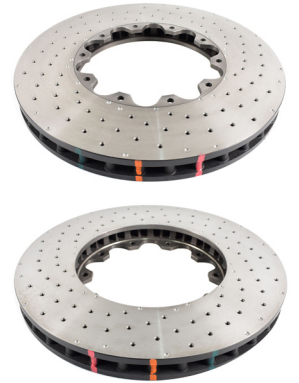
Barcode : **9316391459770**



SUITABLE FOR USE WITH

Series: G6 [OE Direct Replacement] Nuts only supplied

DESCRIPTION & DIMENSIONS (mm)	
Surface Design	XD
Vent Design	Vented
Diameter	390
Height	36
Thickness	36
Min/Max Thickness	34
Centre Hole	179.1
No. Bolts	10
Position	Front
Year Manufactured	2017 - on



5000SERIES

2

CHEVROLET CAMARO ZL1

Part No : **DBA53940BLKS**

Barcode : **9316391459824**



SUITABLE FOR USE WITH

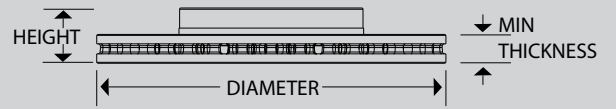
Series: G6 "DBA Design"

DESCRIPTION & DIMENSIONS (mm)	
Surface Design	T3
Vent Design	Vented
Diameter	390
Height	53.5
Thickness	36
Min/Max Thickness	34
Centre Hole	67.5
No. Bolts	5
Position	Front
Year Manufactured	2017 - on



5000SERIES

3



CHEVROLET CAMARO ZL1

Part No : **DBA53940BLKXD**

Barcode : **9316391459831**

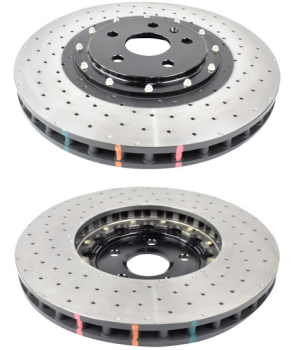


SUITABLE FOR USE WITH

Series: G6 "DBA Design"

DESCRIPTION & DIMENSIONS (mm)

Surface Design	XD
Vent Design	Vented
Diameter	390
Height	53.5
Thickness	36
Min/Max Thickness	34
Centre Hole	67.5
No. Bolts	5
Position	Front
Year Manufactured	2017 - on



5000SERIES

4

CHEVROLET CAMARO ZL1

Part No : **DBA53940.1S**

Barcode : **9316391459794**



SUITABLE FOR USE WITH

Series: G6 "DBA Design"

DESCRIPTION & DIMENSIONS (mm)

Surface Design	T3
Vent Design	Vented
Diameter	390
Height	36
Thickness	36
Min/Max Thickness	34
Centre Hole	180
No. Bolts	12
Position	Front
Year Manufactured	2017 - on



5000SERIES

5

CHEVROLET CAMARO ZL1

Part No : **DBA53940.1XD**

Barcode : **9316391459800**

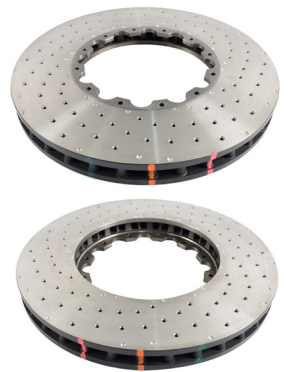


SUITABLE FOR USE WITH

Series: G6 "DBA Design"

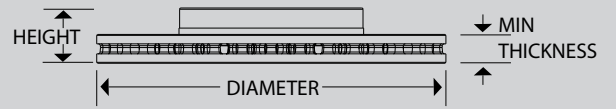
DESCRIPTION & DIMENSIONS (mm)

Surface Design	XD
Vent Design	Vented
Diameter	390
Height	36
Thickness	36
Min/Max Thickness	34
Centre Hole	180
No. Bolts	12
Position	Front
Year Manufactured	2017 - on



5000SERIES

6



HAVAL H8

Part No : **DBA3459E**

Barcode : **9316391457066**



SUITABLE FOR USE WITH

Series: H8

DESCRIPTION & DIMENSIONS (mm)

Surface Design	Enshield
Vent Design	Vented
Diameter	330
Height	63
Thickness	18
Min/Max Thickness	16
Centre Hole	67
No. Bolts	5
Position	Rear
Year Manufactured	10/2015 - 10/2018

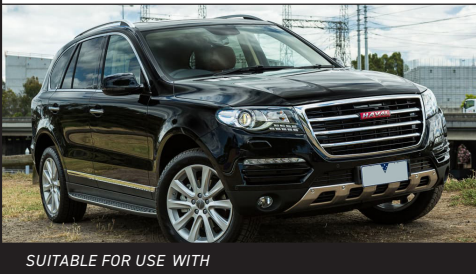


7

HAVAL H8

Part No : **DBA3466E**

Barcode : **9316391457110**



SUITABLE FOR USE WITH

Series: H8

DESCRIPTION & DIMENSIONS (mm)

Surface Design	Enshield
Vent Design	Vented
Diameter	330
Height	54.5
Thickness	32
Min/Max Thickness	29.4
Centre Hole	67
No. Bolts	5
Position	Front
Year Manufactured	10/2015 - 10/2018



8

HAVAL H6

Part No : **DBA3316E**

Barcode : **9316391456960**



SUITABLE FOR USE WITH

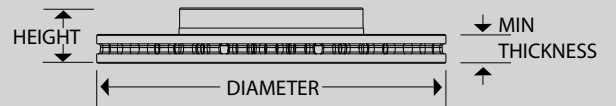
Series: H6

DESCRIPTION & DIMENSIONS (mm)

Surface Design	Enshield
Vent Design	Vented
Diameter	320
Height	47
Thickness	28
Min/Max Thickness	26
Centre Hole	64
No. Bolts	5
Position	Front
Year Manufactured	07/2016 - 2020



9



HYUNDAI I30

Part No : **DBA3454E**

Barcode : **9316391457011**



SUITABLE FOR USE WITH

Series: CN7

DESCRIPTION & DIMENSIONS (mm)

Surface Design	Enshield
Vent Design	Vented
Diameter	280
Height	48.4
Thickness	25
Min/Max Thickness	23
Centre Hole	69
No. Bolts	5
Position	Front
Year Manufactured	08/2020 - on



STREETSERIES

10

HYUNDAI I30 [N-LINE]

Part No : **DBA3453E**

Barcode : **9316391457004**



SUITABLE FOR USE WITH

Series: CN7

DESCRIPTION & DIMENSIONS (mm)

Surface Design	Enshield
Vent Design	Solid
Diameter	284
Height	32
Thickness	10
Min/Max Thickness	8
Centre Hole	76
No. Bolts	5
Position	Rear
Year Manufactured	11/2020 - on



STREETSERIES

11

JEEP GRAND CHEROKEE SRT-8 TRACKHAWK

Part No : **DBA53918.1S**

Barcode : **9316391458612**



SUITABLE FOR USE WITH

Series: WK OE Direct Replacement Floating Bobbin Nuts only supplied

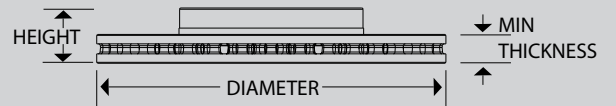
DESCRIPTION & DIMENSIONS (mm)

Surface Design	T3
Vent Design	Vented
Diameter	400
Height	36
Thickness	36
Min/Max Thickness	34
Centre Hole	185
No. Bolts	12
Position	Front
Year Manufactured	11/2017 - on



5000SERIES

12



**JEEP GRAND CHEROKEE
SRT-8 TRACKHAWK**

Part No : **DBA53919.1S**

Barcode : **9316391458636**



SUITABLE FOR USE WITH

Series: WK [DBA Fixed Design X84 & BR7]

DESCRIPTION & DIMENSIONS (mm)

Surface Design	T3
Vent Design	Vented
Diameter	400
Height	36
Thickness	36
Min/Max Thickness	34
Centre Hole	185
No. Bolts	12
Position	Front
Year Manufactured	11/2017 - on



5000SERIES

13

**JEEP GRAND CHEROKEE
SRT-8 TRACKHAWK**

Part No : **DBA53919BLKS**

Barcode : **9316391458643**

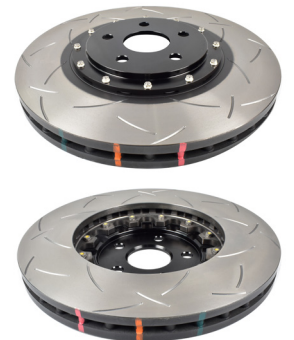


SUITABLE FOR USE WITH

Series: WK "DBA Design"

DESCRIPTION & DIMENSIONS (mm)

Surface Design	T3
Vent Design	Vented
Diameter	400
Height	54.5
Thickness	36
Min/Max Thickness	34
Centre Hole	72
No. Bolts	5
Position	Front
Year Manufactured	11/2017 - on



5000SERIES

14

MERCEDES BENZ A180 / B180

Part No : **DBA3458E**

Barcode : **9316391457059**



SUITABLE FOR USE WITH

Series: W177 & V177 // W247

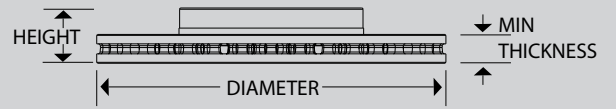
DESCRIPTION & DIMENSIONS (mm)

Surface Design	Enshield
Vent Design	Vented
Diameter	295
Height	51
Thickness	24
Min/Max Thickness	21.4
Centre Hole	67
No. Bolts	5
Position	Front
Year Manufactured	12/2018 - on



STREETSERIES

15



SKODA OCTAVIA [WITH PR CODE 1KD]

16

Part No : **DBA3275E**

Barcode : **9316391456953**



SUITABLE FOR USE WITH

Series: NE

DESCRIPTION & DIMENSIONS (mm)

Surface Design	Enshield
Vent Design	Solid
Diameter	253
Height	61.4
Thickness	10
Min/Max Thickness	8
Centre Hole	65
No. Bolts	5
Position	Rear
Year Manufactured	1/2018 - on



SSANGYONG MUSSO XLV

17

Part No : **DBA3462E**

Barcode : **9316391457097**



SUITABLE FOR USE WITH

Series: Q201 / Q215

DESCRIPTION & DIMENSIONS (mm)

Surface Design	Enshield
Vent Design	Vented
Diameter	320
Height	57.5
Thickness	30
Min/Max Thickness	28.4
Centre Hole	85
No. Bolts	5
Position	Front
Year Manufactured	2019 - on



[Return to contents](#)