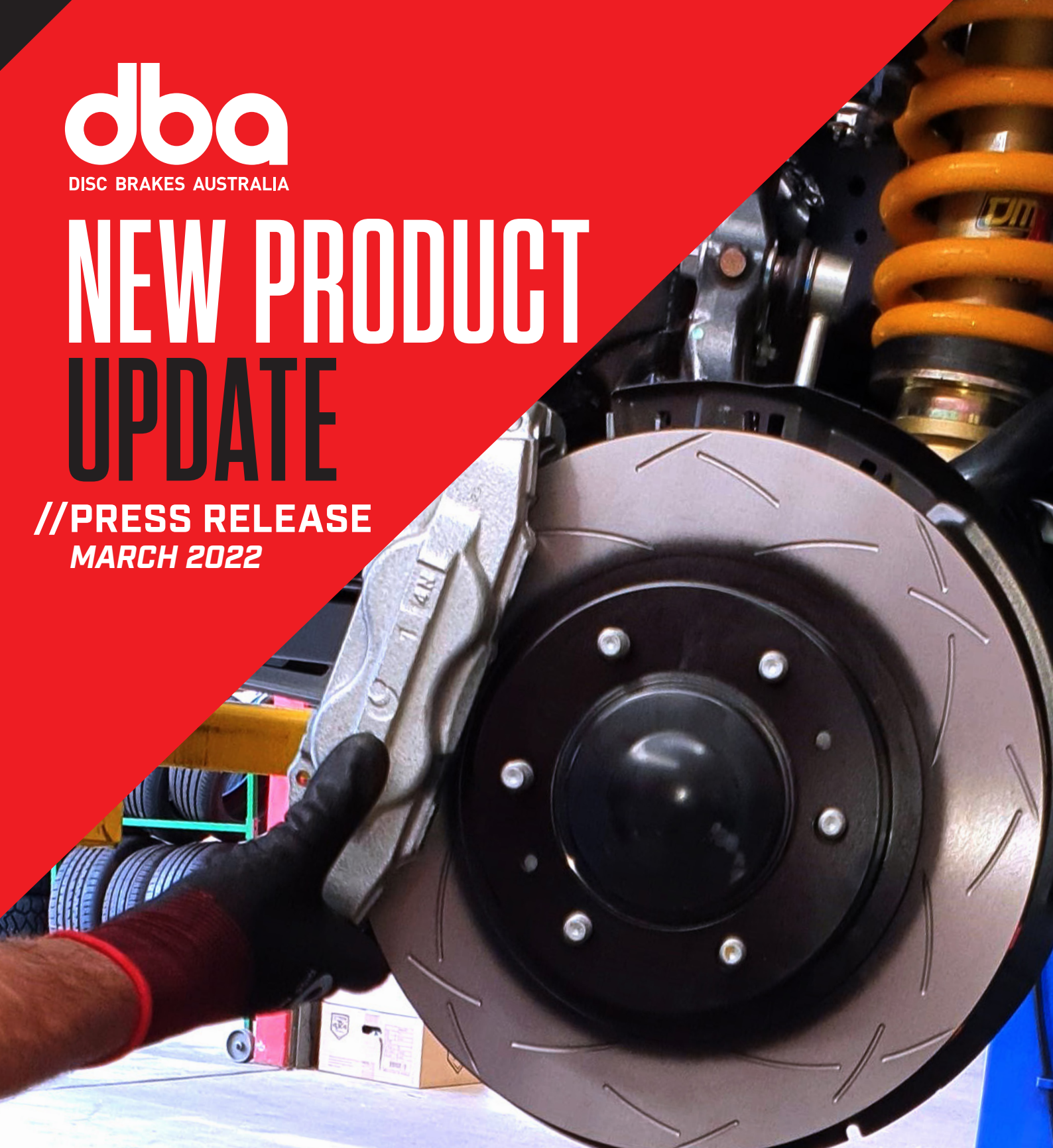


dba

DISC BRAKES AUSTRALIA

NEW PRODUCT UPDATE

//PRESS RELEASE
MARCH 2022



STREET SERIES

4000 SERIES

5000 SERIES

dba STREET
SERIES

dba STREET
PERFORMANCE

dba XTREME
PERFORMANCE

BRAKE
CALIPER

BRAKE
SHOES

FOR FURTHER INFORMATION, VISIT DBA.COM.AU



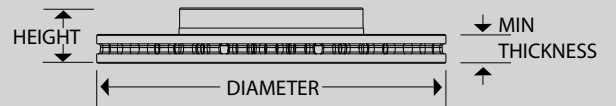
**MORE THAN ROTORS
MORE APPLICATIONS**

While today DBA is so much more than brake rotors, THE DISC is what has made us what we are today. To celebrate our hero product and give it the praise it deserves, we have given it brand new wrapping!

Come and see our new packaging - and what's inside - at the AAA Expo, Melbourne Convention Centre, 7 - 9 April 2022, stand L44.

FOR MORE INFO VISIT
DBA.COM.AU/PACKAGINGUPDATE/





AUDI E-TRON ELECTRIC & Q7

Part No : **DBA3014E**

Barcode : **9316391456755**



SUITABLE FOR USE WITH

Series: GE "Suits PR Code 1LN, 1ZV, 1LP & 1ZT" & 4M "Suits PR Code 1LN, 1LP & 1ZT"

DESCRIPTION & DIMENSIONS (mm)

Surface Design	Enshield
Vent Design	Vented
Diameter	375
Height	57.2
Thickness	36
Min/Max Thickness	34
Centre Hole	68
No. Bolts	5
Position	Front
Year Manufactured	04/2020-on & 08/2015-on



1

BMW X5 / X6

Part No : **DBA3262EL**

Barcode : **9316391456939**



SUITABLE FOR USE WITH

Series: E70 & F15 / E71 & F16

DESCRIPTION & DIMENSIONS (mm)

Surface Design	Enshield
Vent Design	Vented
Diameter	385
Height	62
Thickness	36
Min/Max Thickness	34.4
Centre Hole	75
No. Bolts	5
Position	Front Left
Year Manufactured	2010-2013 & 2012-2018/ 2009-2014 & 2015-2019



2

BMW X5 / X6

Part No : **DBA3262ER**

Barcode : **9316391456946**



SUITABLE FOR USE WITH

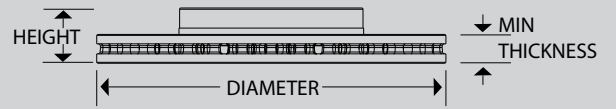
Series: E70 & F15 / E71 & F16

DESCRIPTION & DIMENSIONS (mm)

Surface Design	Enshield
Vent Design	Vented
Diameter	385
Height	62
Thickness	36
Min/Max Thickness	34.4
Centre Hole	75
No. Bolts	5
Position	Front Right
Year Manufactured	2010-2013 & 2012-2018/ 2009-2014 & 2015-2019



3



DAIHATSU SIRION

Part No : **DBA1962**

Barcode : **9316391456922**



SUITABLE FOR USE WITH

Series: M301S Chass

DESCRIPTION & DIMENSIONS (mm)

Surface Design	Enshield
Vent Design	Drum
Diameter	180
Height	46.8
Thickness	
Min/Max Thickness	181
Centre Hole	55
No. Bolts	4
Position	Rear
Year Manufactured	03/2005-04/2013



STREETSERIES

4

TOYOTA HI-ACE

Part No : **DBA1956**

Barcode : **9316391456489**



SUITABLE FOR USE WITH

Series:300#

DESCRIPTION & DIMENSIONS (mm)

Surface Design	Enshield
Vent Design	Drum
Diameter	254
Height	77.4
Thickness	
Min/Max Thickness	256
Centre Hole	77
No. Bolts	6
Position	Rear
Year Manufactured	02/2019-on

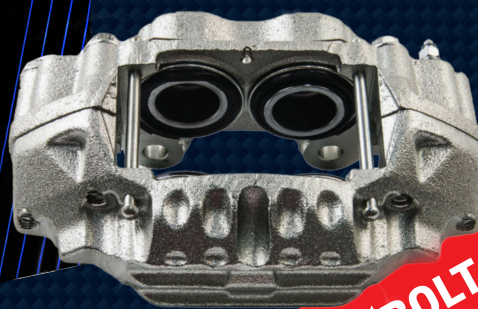


STREETSERIES

5




MEET OUR NEW FAMILY MEMBER...

STREET SERIES BRAKE CALIPER



**"BOLT OFF, BOLT ON!"
SAVE TIME & MONEY**

IDEAL FOR:

-  **OE REPLACEMENT**
-  **PASSENGER CARS & SUV**
-  **4X4 & LIGHT COMMERCIAL VEHICLES**

**NEW APPLICATIONS CONSTANTLY
BEING DEVELOPED**

PERFECT FOR USE WITH

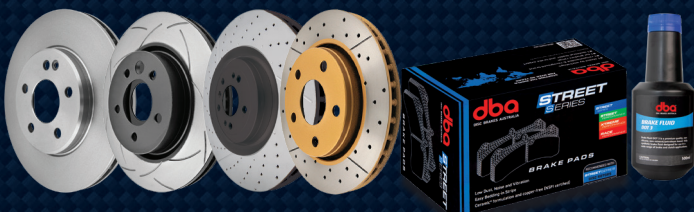
STREETSERIES

+

**STREET
SERIES**

BRAKE ROTOR

BRAKE PADS

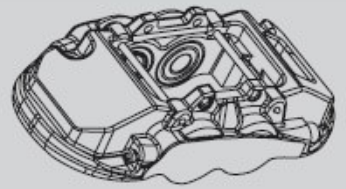


Features:

- ▶ **Direct Replacement – single unit**
- ▶ **Restores original quality and performance without compromise**
- ▶ **Brackets included**
- ▶ **Brake pads not included to allow 'selection by application' usage**

/// **FOR MORE INFO & WHERE TO BUY VISIT
DBA.COM.AU**

dba
DISC BRAKES AUSTRALIA



6

Ford
Falcon

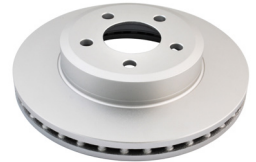
Part No: **DBAC1103**
Left Hand Caliper

Barcode: **9316391463692**

Part No: **DBAC1102**
Right Hand Caliper

Barcode: **9316391463685**

DESCRIPTION	DIMENSIONS (mm)
Caliper Type	Floating
No Piston	2
Piston Diameter mm	42.0
Disc Pad	DB1473
Disc Rotor	DBA504E
Front/Rear	Front
Year Manufactured	9/2002 - 9/05



Suitable for use with

Series:
BA II With Standard Brakes

Ford
Falcon

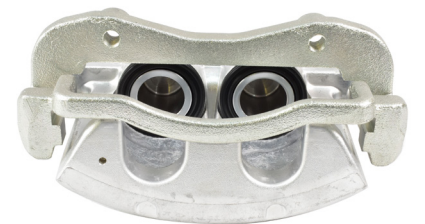
Part No: **DBAC1102**
Left Hand Caliper

Barcode: **9316391463685**

Part No: **DBAC1103**
Right Hand Caliper

Barcode: **9316391463692**

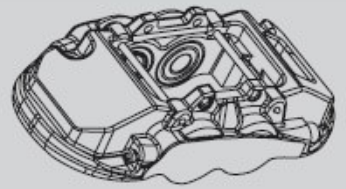
DESCRIPTION	DIMENSIONS (mm)
Caliper Type	Floating
No Piston	2
Piston Diameter mm	42.0
Disc Pad	DB1473
Disc Rotor	DBA504E
Front/Rear	Front
Year Manufactured	3/2012 - 11/14



Suitable for use with

Series:
FG With Standard Brakes

7



8

**Ford
Falcon**

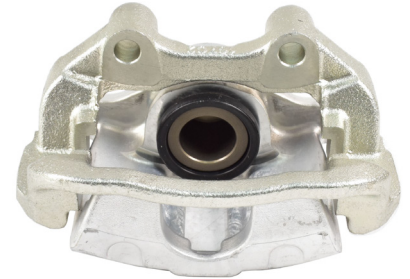
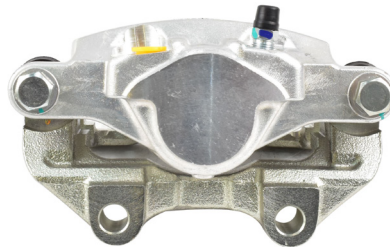
Part No: DBAC1106
Left Hand Caliper

Barcode: 9316391463708

Part No: DBAC1107
Right Hand Caliper

Barcode: 9316391463715

DESCRIPTION	DIMENSIONS (mm)
Caliper Type	Floating
No Piston	1
Piston Diameter mm	40.5
Disc Pad	DB1376
Disc Rotor	DBA505E
Front/Rear	Rear
Year Manufactured	9/2002 - 9/05



Suitable for use with

Series:
BA II With Standard Brakes

**Holden
Commodore**

Part No: DBAC1080
Left Hand Caliper

Barcode: 9316391463647

Part No: DBAC1081
Right Hand Caliper

Barcode: 9316391463654

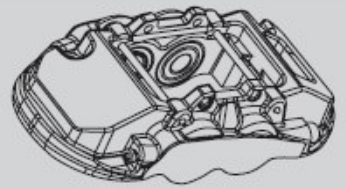
DESCRIPTION	DIMENSIONS (mm)
Caliper Type	Floating
No Piston	2
Piston Diameter mm	42.0
Disc Pad	DB1765
Disc Rotor	DBA2028E
Front/Rear	Front
Year Manufactured	9/2010 - 4/13



Suitable for use with

Series:
VE SS 6.0L V8

9



10

Holden
Commodore

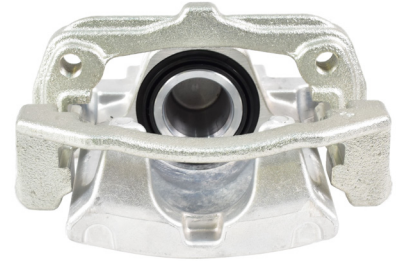
Part No: **DBAC1072**
Left Hand Caliper

Barcode: **9316391463722**

Part No: **DBAC1073**
Right Hand Caliper

Barcode: **9316391463739**

DESCRIPTION	DIMENSIONS (mm)
Caliper Type	Floating
No Piston	1
Piston Diameter mm	45.0
Disc Pad	DB1766
Disc Rotor	DBA2027E
Front/Rear	Rear
Year Manufactured	8/2006 - 8/09



Suitable for use with

Series:
VE 3.6L V6

Holden
Commodore

Part No: **DBAC1074**
Left Hand Caliper

Barcode: **9316391463746**

Part No: **DBAC1075**
Right Hand Caliper

Barcode: **9316391463753**

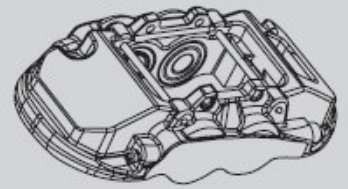
DESCRIPTION	DIMENSIONS (mm)
Caliper Type	Floating
No Piston	2
Piston Diameter mm	42.0
Disc Pad	DB2266
Disc Rotor	DBA2026E
Front/Rear	Front
Year Manufactured	9/2014 - 10/17



Suitable for use with

Series:
VF 3.6L V6

11



12

Holden
Commodore

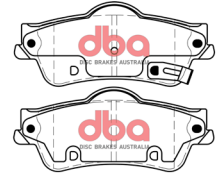
Part No: **DBAC1078**
Left Hand Caliper

Barcode: **9316391463661**

Part No: **DBAC1079**
Right Hand Caliper

Barcode: **9316391463678**

DESCRIPTION	DIMENSIONS (mm)
Caliper Type	Floating
No Piston	1
Piston Diameter mm	45.0
Disc Pad	DB2267
Disc Rotor	DBA2027E
Front/Rear	Rear
Year Manufactured	5/2013 - 10/17



STREETSERIES

Suitable for use with

Series:
VF 3.6L V6

Holden
Commodore

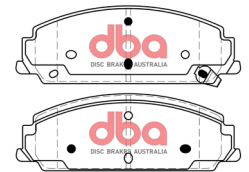
Part No: **DBAC1074**
Left Hand Caliper

Barcode: **9316391463746**

Part No: **DBAC1075**
Right Hand Caliper

Barcode: **9316391463753**

DESCRIPTION	DIMENSIONS (mm)
Caliper Type	Floating
No Piston	2
Piston Diameter mm	42.0
Disc Pad	DB2266
Disc Rotor	DBA2028E
Front/Rear	Front
Year Manufactured	9/2014 - 9/15

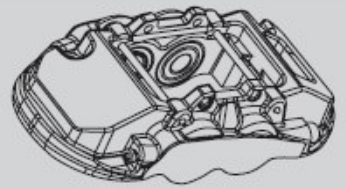


STREETSERIES

Suitable for use with

Series:
VF Calais 6.0L V8

13



14

Holden
Commodore

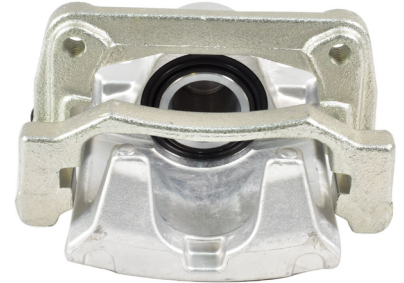
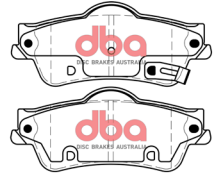
Part No: **DBAC1078**
Left Hand Caliper

Barcode: **9316391463661**

Part No: **DBAC1079**
Right Hand Caliper

Barcode: **9316391463678**

DESCRIPTION	DIMENSIONS (mm)
Caliper Type	Floating
No Piston	1
Piston Diameter mm	45.0
Disc Pad	DB2267
Disc Rotor	DBA2029E
Front/Rear	Rear
Year Manufactured	5/2013 - 9/15



STREETSERIES

Suitable for use with

Series:
VF Calais 6.0L V8

Holden
Rodeo

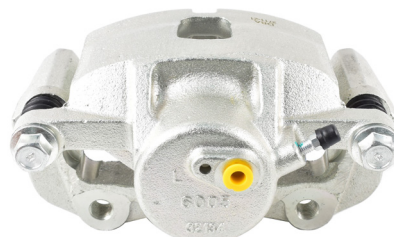
Part No: **DBAC1266**
Left Hand Caliper

Barcode: **9316391459169**

Part No: **DBAC1267**
Right Hand Caliper

Barcode: **9316391459176**

DESCRIPTION	DIMENSIONS (mm)
Caliper Type	Floating
No Piston	1
Piston Diameter mm	60.0
Disc Pad	DB1270
Disc Rotor	DBA840
Front/Rear	Front
Year Manufactured	3/1998 - 2/03

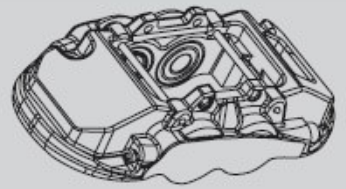


STREETSERIES

Suitable for use with

Series:
3.0L V6

15



16

Holden
Statesman

Part No: **DBAC1074**
Left Hand Caliper

Barcode: **9316391463746**

Part No: **DBAC1075**
Right Hand Caliper

Barcode: **9316391463753**

DESCRIPTION	DIMENSIONS (mm)
Caliper Type	Floating
No Piston	2
Piston Diameter mm	42.0
Disc Pad	DB2266
Disc Rotor	DBA2026E
Front/Rear	Front
Year Manufactured	9/2014 - 9/15



STREETSERIES

Suitable for use with

Series:
WM 3.6L V6

Holden
Statesman

Part No: **DBAC1078**
Left Hand Caliper

Barcode: **9316391463661**

Part No: **DBAC1079**
Right Hand Caliper

Barcode: **9316391463678**

DESCRIPTION	DIMENSIONS (mm)
Caliper Type	Floating
No Piston	1
Piston Diameter mm	45.0
Disc Pad	DB2267
Disc Rotor	DBA2027E
Front/Rear	Rear
Year Manufactured	5/2013 - 9/14

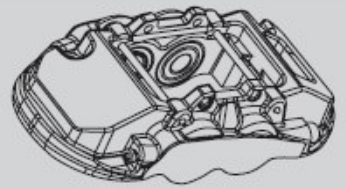
17



STREETSERIES

Suitable for use with

Series:
WM 3.6L V6



18

Holden
Statesman

Part No: **DBAC1074**
Left Hand Caliper

Barcode: **9316391463746**

Part No: **DBAC1075**
Right Hand Caliper

Barcode: **9316391463753**

DESCRIPTION	DIMENSIONS (mm)
Caliper Type	Floating
No Piston	2
Piston Diameter mm	42.0
Disc Pad	DB2266
Disc Rotor	DBA2028E
Front/Rear	Front
Year Manufactured	9/2014 - 9/15



Suitable for use with

Series:
WM 6.0L V8

Holden
Statesman

Part No: **DBAC1078**
Left Hand Caliper

Barcode: **9316391463661**

Part No: **DBAC1079**
Right Hand Caliper

Barcode: **9316391463678**

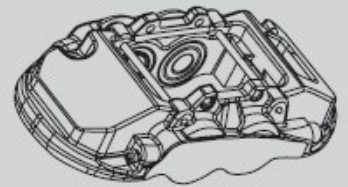
DESCRIPTION	DIMENSIONS (mm)
Caliper Type	Floating
No Piston	1
Piston Diameter mm	45.0
Disc Pad	DB1766
Disc Rotor	DBA2029E
Front/Rear	Rear
Year Manufactured	5/2013 - 9/15



Suitable for use with

Series:
WM 6.0L V8

19



20

Holden
Statesman Caprice

Part No: **DBAC1080**
Left Hand Caliper

Barcode: **9316391463647**

Part No: **DBAC1081**
Right Hand Caliper

Barcode: **9316391463654**

DESCRIPTION	DIMENSIONS (mm)
Caliper Type	Floating
No Piston	2
Piston Diameter mm	42.0
Disc Pad	DB1765
Disc Rotor	DBA2028E
Front/Rear	Front
Year Manufactured	5/2013 - 8/14



Suitable for use with

Series:
WM 6.0L V8

Honda
Accord

Part No: **DBAC1052**
Left Hand Caliper

Barcode: **9316391458926**

Part No: **DBAC1053**
Right Hand Caliper

Barcode: **9316391458933**

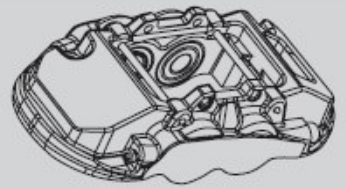
DESCRIPTION	DIMENSIONS (mm)
Caliper Type	Floating
No Piston	1
Piston Diameter mm	57.0
Disc Pad	DB1515
Disc Rotor	DBA2510E
Front/Rear	Front
Year Manufactured	1/2002 - 5/08



Suitable for use with

Series:
CL 2.4L

21



22

**Honda
CR-V**

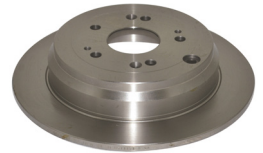
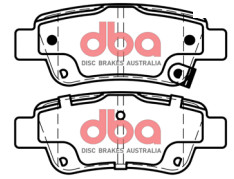
Part No: DBAC1092
Left Hand Caliper

Barcode: 9316391459046

Part No: DBAC1093
Right Hand Caliper

Barcode: 9316391459053

DESCRIPTION	DIMENSIONS (mm)
Caliper Type	Floating
No Piston	1
Piston Diameter mm	38.0
Disc Pad	DB2256
Disc Rotor	DBA2611
Front/Rear	Rear
Year Manufactured	1/2007 - 6/12



STREETSERIES

Suitable for use with

Series:
RM 2.2L Turbo Diesel

**Hyundai
IX35**

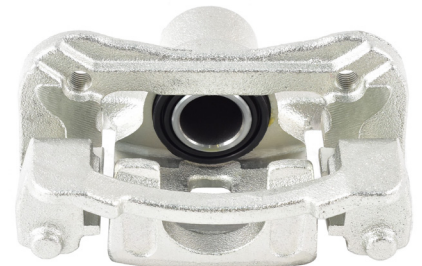
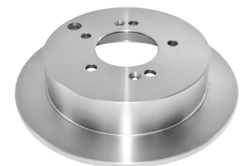
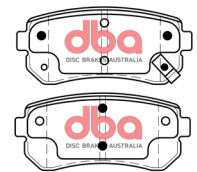
Part No: DBAC1234
Left Hand Caliper

Barcode: 9316391459121

Part No: DBAC1235
Right Hand Caliper

Barcode: 9316391459138

DESCRIPTION	DIMENSIONS (mm)
Caliper Type	Floating
No Piston	1
Piston Diameter mm	34.0
Disc Pad	DB1943
Disc Rotor	DBA465
Front/Rear	Rear
Year Manufactured	2/2010 - 6/15

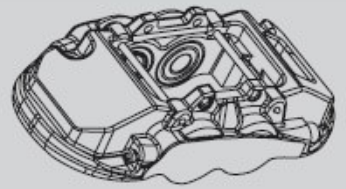


STREETSERIES

Suitable for use with

Series:
2.0L Turbo Diesel

23



24

Hyundai
Terracan

Part No: **DBAC1284**
Left Hand Caliper

Barcode: **9316391459206**

Part No: **DBAC1285**
Right Hand Caliper

Barcode: **9316391459213**

DESCRIPTION	DIMENSIONS (mm)
Caliper Type	Floating
No Piston	1
Piston Diameter mm	43.0
Disc Pad	DB1862
Disc Rotor	DBA467
Front/Rear	Rear
Year Manufactured	1/2005 - 1/07



Suitable for use with

Series:
HP 2.9L Turbo Diesel

Kia
Sportage

Part No: **DBAC1310**
Left Hand Caliper

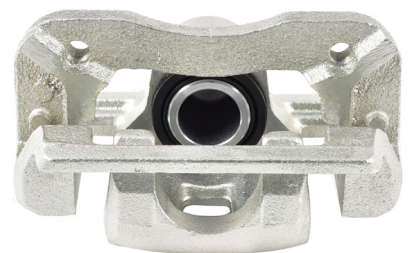
Barcode: **9316391459220**

Part No: **DBAC1311**
Right Hand Caliper

Barcode: **9316391459237**

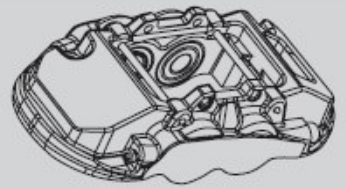
DESCRIPTION	DIMENSIONS (mm)
Caliper Type	Floating
No Piston	1
Piston Diameter mm	34.0
Disc Pad	DB1451
Disc Rotor	DBA3331E
Front/Rear	Rear
Year Manufactured	4/2005 - 8/09

25



Suitable for use with

Series:
KM 2.7L V6



26

**Land Rover
Discovery IV**

Part No: DBAC1280
Left Hand Caliper

Barcode: 9316391459183

Part No: DBAC1281
Right Hand Caliper

Barcode: 9316391459190

DESCRIPTION	DIMENSIONS (mm)
Caliper Type	Floating
No Piston	2
Piston Diameter mm	48.0
Disc Pad	DB1780
Disc Rotor	DBA2090
Front/Rear	Front
Year Manufactured	9/2009 - 11/12



STREETSERIES

Suitable for use with

Series:
2.7L Turbo Diesel

**Land Rover
Discovery IV**

Part No: DBAC1264
Left Hand Caliper

Barcode: 9316391459145

Part No: DBAC1265
Right Hand Caliper

Barcode: 9316391459152

DESCRIPTION	DIMENSIONS (mm)
Caliper Type	Floating
No Piston	1
Piston Diameter mm	45.0
Disc Pad	DB1781
Disc Rotor	DBA2091
Front/Rear	Rear
Year Manufactured	9/2009 - 11/12

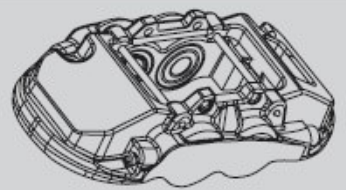


STREETSERIES

Suitable for use with

Series:
2.7L Turbo Diesel

27



28

**Lexus
IS250C**

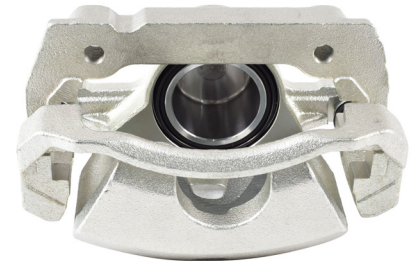
Part No: DBAC1064
Left Hand Caliper

Barcode: 9316391458988

Part No: DBAC1065
Right Hand Caliper

Barcode: 9316391458995

DESCRIPTION	DIMENSIONS (mm)
Caliper Type	Floating
No Piston	1
Piston Diameter mm	60.0
Disc Pad	DB1852
Disc Rotor	DBA2726E
Front/Rear	Front
Year Manufactured	4/2009 - 10/14



Suitable for use with

Series:
GSE20 2.5L

STREETSERIES

**Mitsubishi
Pajero**

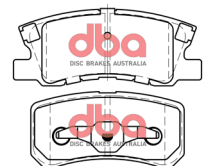
Part No: DBAC1040
Left Hand Caliper

Barcode: 9316391458902

Part No: DBAC1041
Right Hand Caliper

Barcode: 9316391458919

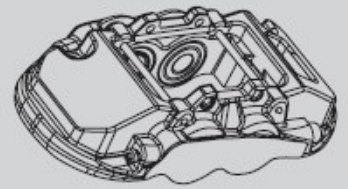
DESCRIPTION	DIMENSIONS (mm)
Caliper Type	Floating
No Piston	1
Piston Diameter mm	45.0
Disc Pad	DB1464
Disc Rotor	DBA661E
Front/Rear	Rear
Year Manufactured	2/2000 - 9/06



Suitable for use with

Series:
NM & NP

STREETSERIES



**Nissan
Pathfinder**

Part No: DBAC1098
Left Hand Caliper

Barcode: 9316391459060

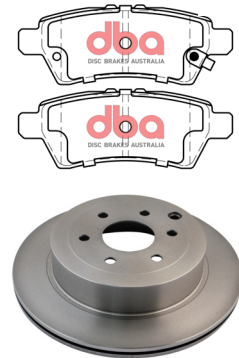
Part No: DBAC1099
Right Hand Caliper

Barcode: 9316391459077

Suitable for use with

Series:
R51 2.5L Turbo Diesel

DESCRIPTION	DIMENSIONS (mm)
Caliper Type	Floating
No Piston	1
Piston Diameter mm	38.0
Disc Pad	DB1919
Disc Rotor	DBA2311E
Front/Rear	Rear
Year Manufactured	7/2005 - 9/13



30



STREETSERIES

**Subaru
Tribeca**

Part No: DBAC1164
Left Hand Caliper

Barcode: 9316391459107

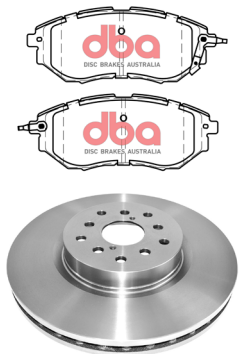
Part No: DBAC1165
Right Hand Caliper

Barcode: 9316391459114

Suitable for use with

Series:
3.0L & 3.6L AWD

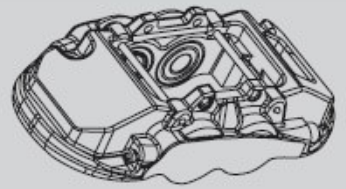
DESCRIPTION	DIMENSIONS (mm)
Caliper Type	Floating
No Piston	2
Piston Diameter mm	43.0
Disc Pad	DB1722
Disc Rotor	DBA2650-10
Front/Rear	Front
Year Manufactured	3/2006 - 1/14



31



STREETSERIES



32

**Suzuki
Grand Vitara**

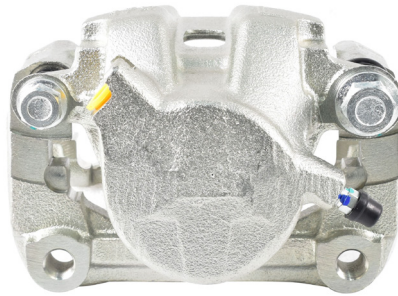
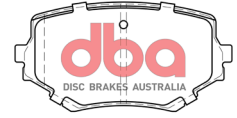
Part No: DBAC1066
Left Hand Caliper

Barcode: 9316391459008

Part No: DBAC1067
Right Hand Caliper

Barcode: 9316391459015

DESCRIPTION	DIMENSIONS (mm)
Caliper Type	Floating
No Piston	1
Piston Diameter mm	57.0
Disc Pad	DB1312
Disc Rotor	DBA579
Front/Rear	Front
Year Manufactured	4/1998 - 8/05



Suitable for use with

Series:
SQ625 2.5L V6

**Suzuki
Grand Vitara**

Part No: DBAC1068
Left Hand Caliper

Barcode: 9316391459022

Part No: DBAC1069
Right Hand Caliper

Barcode: 9316391459039

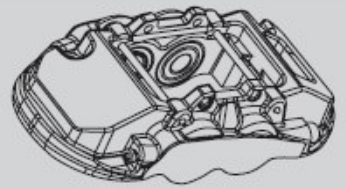
DESCRIPTION	DIMENSIONS (mm)
Caliper Type	Floating
No Piston	1
Piston Diameter mm	60.0
Disc Pad	DB1842
Disc Rotor	DBA2580E
Front/Rear	Front
Year Manufactured	8/2008 - 1/19



Suitable for use with

Series:
JB424 2.4L

33



34

**Toyota
Corolla**

Part No: DBAC1056
Left Hand Caliper

Barcode: 9316391458940

Part No: DBAC1057
Right Hand Caliper

Barcode: 9316391458957

DESCRIPTION	DIMENSIONS (mm)
Caliper Type	Floating
No Piston	1
Piston Diameter mm	60.0
Disc Pad	DB1802
Disc Rotor	DBA2742E
Front/Rear	Front
Year Manufactured	3/2007 - 7/12



Suitable for use with

Series:
ZRE152 1.8L

**Toyota
Hiace**

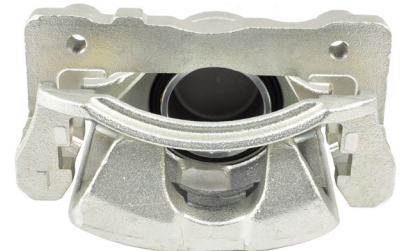
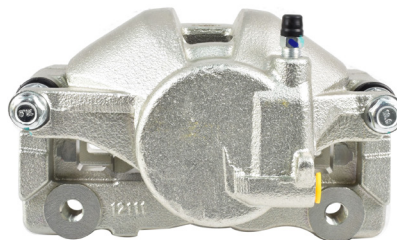
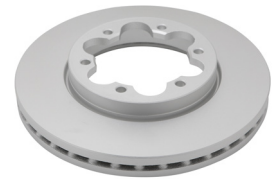
Part No: DBAC1134
Left Hand Caliper

Barcode: 9316391463531

Part No: DBAC1135
Right Hand Caliper

Barcode: 9316391463548

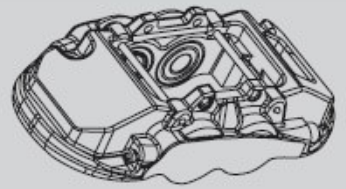
DESCRIPTION	DIMENSIONS (mm)
Caliper Type	Floating
No Piston	1
Piston Diameter mm	66.6
Disc Pad	DB1772
Disc Rotor	DBA2732E
Front/Rear	Front
Year Manufactured	1/2005 - 1/2013



Suitable for use with

Series:
KDH/TRH201, TRH221

35



36

**Toyota
Kluger**

Part No: DBAC1062
Left Hand Caliper

Barcode: 9316391458964

Part No: DBAC1063
Right Hand Caliper

Barcode: 9316391458971

DESCRIPTION	DIMENSIONS (mm)
Caliper Type	Floating
No Piston	1
Piston Diameter mm	41.5
Disc Pad	DB2005
Disc Rotor	DBA2735E
Front/Rear	Rear
Year Manufactured	5/2007 - 2/10



STREETSERIES

Suitable for use with

Series:
GSU40, GSU45 3.5L V6

**Volkswagen
Tiguan**

Part No: DBAC1100
Left Hand Caliper

Barcode: 9316391459084

Part No: DBAC1101
Right Hand Caliper

Barcode: 9316391459091

DESCRIPTION	DIMENSIONS (mm)
Caliper Type	Floating
No Piston	1
Piston Diameter mm	41.0
Disc Pad	
Disc Rotor	DBA2816E
Front/Rear	Rear
Year Manufactured	1/2008 - 7/11



STREETSERIES

Suitable for use with

Series:
2.0L Turbo With Engine CAWA

37